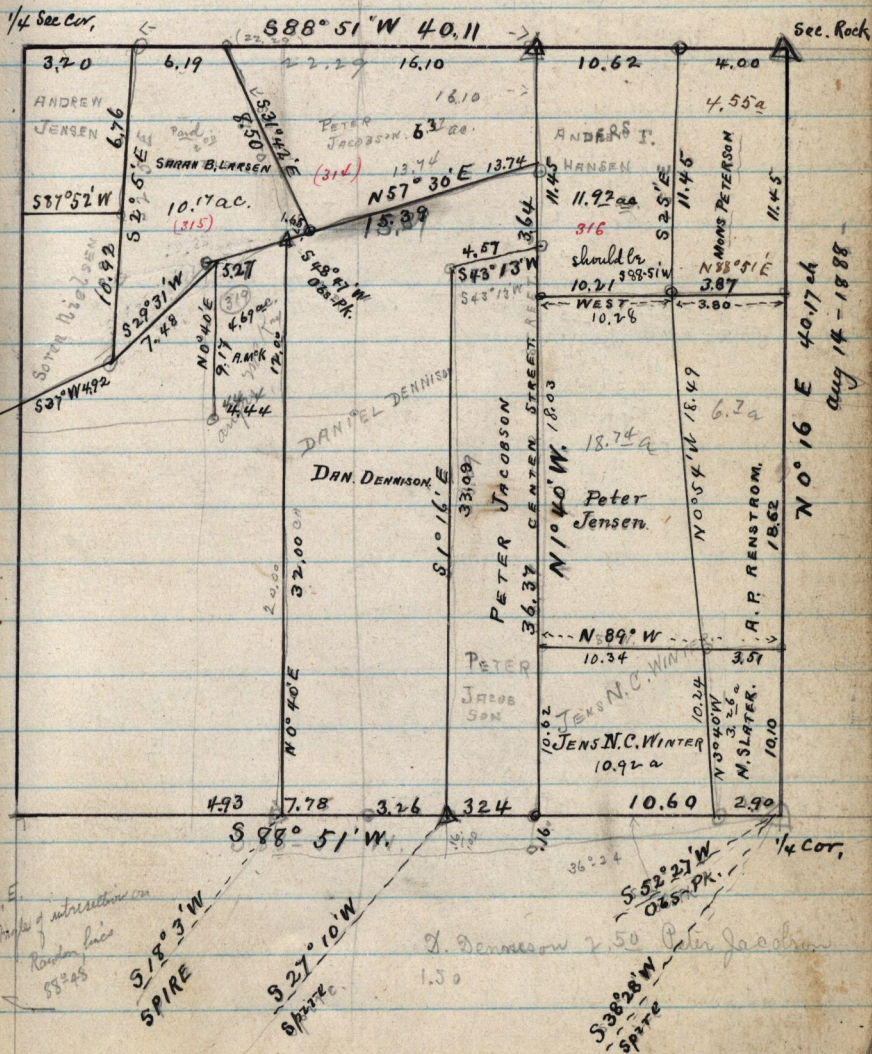


Huntsville July 6-8-1885

N. E. 1/4 Sec. 7-T-6-N-R-2-EAST-

E 1/2 & NW 1/4 of said 1/4 Sec. Pat.
By Hammond & Coetsen.



Aug 14 - 1888

N.E. Angle of intersection on
Rock line
55° 45'

S 51° 3' W
SPIRE

S 27° 10' W
SPIRE

S 52° 27' W
OBS. PK.
S 38° 28' W
SPIRE

D. Dennison 2.50 Peter Jacobson
1.50

56.20